

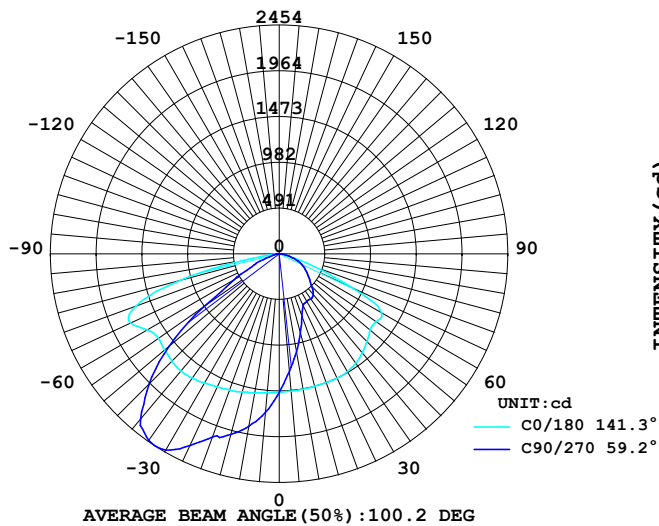
LUMINAIRE PHOTOMETRIC TEST REPORT

Report number:

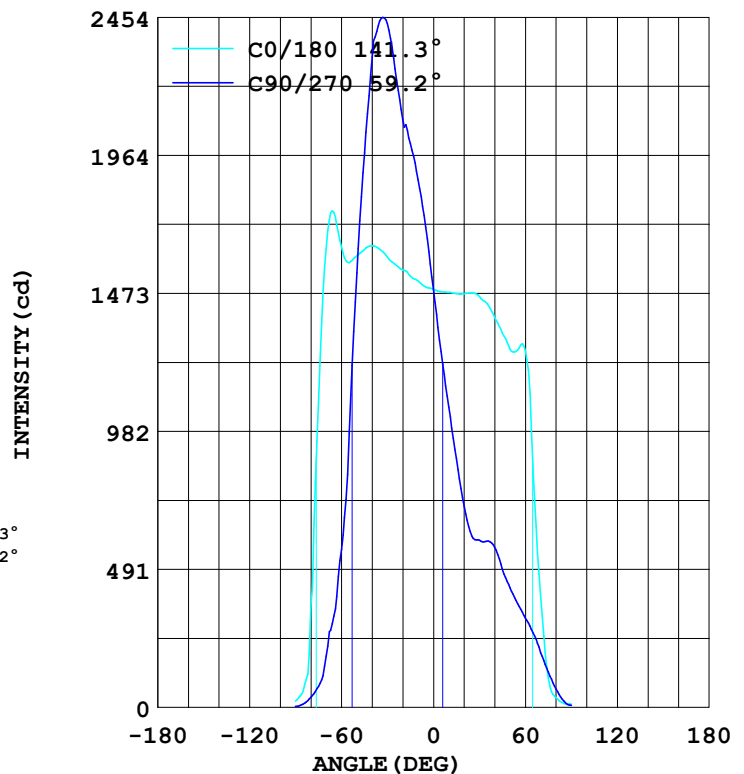
MANUFACTURER: ILUMEN GMBH	Address:	
NAME: Agnes A	TYPE: IL-PO29A-N0402C-T3B	WEIGHT:
SPECIFICATION: 5050LED、3000K、T3B	DIMENSION:	SERIAL No.:

DATA OF LAMP		Imax(cd)	3123	S/MH (C0/180)	1.67
MODEL		EFFICIENCY (%)	100.0	S/MH (C90/270)	1.73
NOMINAL POWER(W)	40	TOTAL FLUX(lm)	5876.8	Voltage(V)	231.0
RATED VOLTAGE (V)	232	EFFICIENCY (lm/W)	151.3	Current(A)	0.164
NOMINAL FLUX(lm)	5876.9	η up (%)	0.0	Power(W)	38.84
LAMPS QUANTITY	1	η down (%)	100.0	Power Factor (PF)	0.919
TEST VOLTAGE (V)	231.0	Effective Flux(lm)	0.0	EEL	0.000

LUMINOUS INTENSITY DISTRIBUTION



LUMINOUS INTENSITY DISTRIBUTION



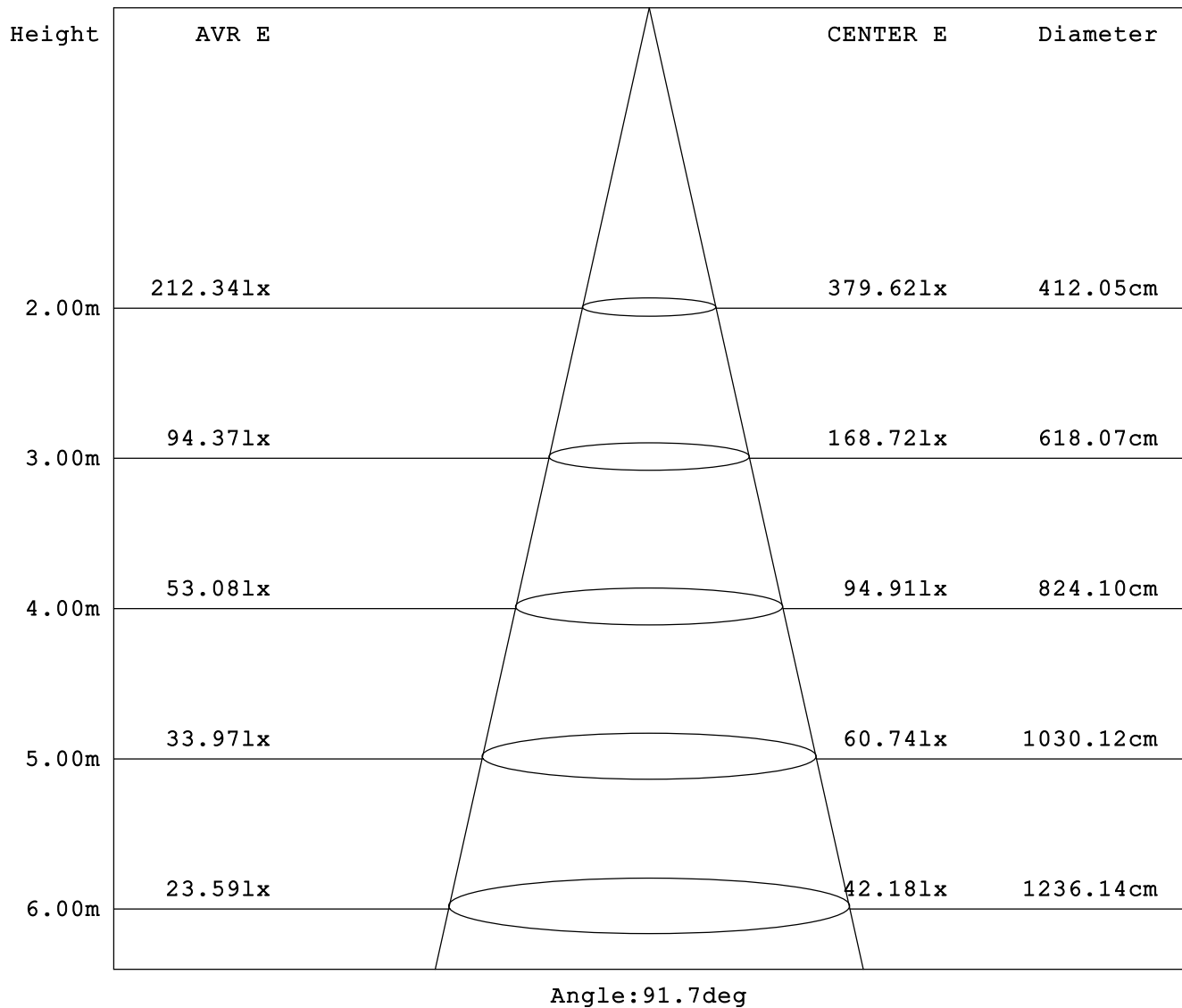
Test System:
 Temperature:25.3DEG
 Operators:
 Test Date:2025.07.01

Test Set: 5.0deg/s C-Gamma (TYPE C)
 Humidity:65.0%
 Test Distance:10.000 m
 Remarks:

AVERAGE AND CENTER E Figure

Report number:

MANUFACTURER: ILUMEN GMBH	Address:	
NAME: Agnes A	TYPE: IL-PO29A-N0402C-T3B	WEIGHT:
SPECIFICATION: 5050LED、3000K、T3B	DIMENSION:	SERIAL No.:



Test System:
Temperature: 25.3DEG
Operators:
Test Date: 2025.07.01

Test Set: 5.0deg/s C-Gamma (TYPE C)
Humidity: 65.0%
Test Distance: 10.000 m
Remarks:

ZONAL FLUX DIAGRAM

Report number:

MANUFACTURER: ILUMEN GMBH	Address:	
NAME: Agnes A	TYPE: IL-PO29A-N0402C-T3B	WEIGHT:
SPECIFICATION: 5050LED、3000K、T3B	DIMENSION:	SERIAL No.:

γ	C0	C45	C90	C135	C180	C225	C270	C315	γ	Zone	total
5.0	1495	1364	1707	1634	1479	1606	1265	1342	0- 5	35.54	35.54
10.0	1516	1241	1877	1758	1476	1732	1068	1198	5- 10	106.3	141.8
15.0	1534	1126	2005	1876	1472	1834	883.7	1063	10- 15	175.4	317.3
20.0	1556	1013	2092	1989	1472	1951	716.3	930.7	15- 20	241.9	559.3
25.0	1576	892.2	2271	2124	1473	2050	610.1	799.3	20- 25	307.6	866.9
30.0	1602	773.7	2432	2266	1461	2120	594.3	680.8	25- 30	375.8	1243
35.0	1630	672.8	2442	2340	1436	2226	591.2	613.3	30- 35	444.4	1687
40.0	1642	623.9	2315	2417	1387	2358	569.9	616.3	35- 40	504.0	2191
45.0	1629	612.3	1973	2395	1333	2453	492.1	646.1	40- 45	544.8	2736
50.0	1605	632.2	1545	2270	1274	2471	425.8	631.0	45- 50	561.3	3297
55.0	1582	587.3	974.9	2003	1271	2441	369.1	605.9	50- 55	550.2	3848
60.0	1637	469.3	561.9	1803	1270	2304	318.6	469.7	55- 60	516.1	4364
65.0	1760	328.1	325.3	1467	852.3	2284	265.3	327.5	60- 65	482.3	4846
70.0	1632	230.7	182.5	943.8	394.5	2328	193.9	250.4	65- 70	450.8	5297
75.0	1086	123.3	74.94	266.1	104.0	1832	125.7	127.1	70- 75	347.2	5644
80.0	358.9	45.28	36.38	77.50	34.81	603.2	65.90	52.33	75- 80	183.2	5828
85.0	57.15	16.34	11.76	28.20	14.34	53.02	22.98	15.77	80- 85	40.25	5868
90.0	22.44	10.86	4.248	10.54	11.95	10.54	7.843	5.849	85- 90	9.003	5877
95.0									90- 95		
100.0									95-100		
105.0									100-105		
110.0									105-110		
115.0									110-115		
120.0									115-120		
125.0									120-125		
130.0									125-130		
135.0									130-135		
140.0									135-140		
145.0									140-145		
150.0									145-150		
155.0									150-155		
160.0									155-160		
165.0									160-165		
170.0									165-170		
175.0									170-175		
180.0									175-180		
DEG	LUMINOUS INTENSITY:cd									UNIT:lm	

Test System:
Temperature:25.3DEG
Operators:
Test Date:2025.07.01

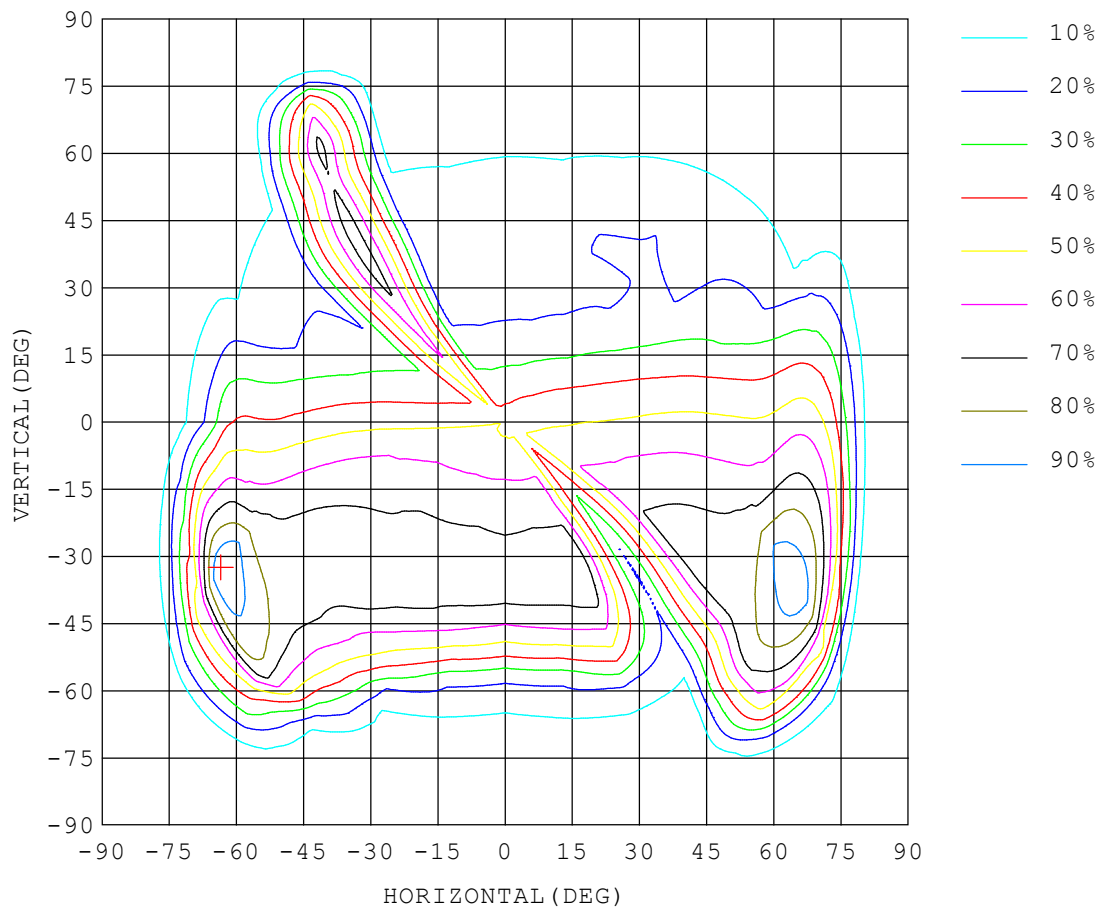
Test Set: 5.0deg/s C-Gamma (TYPE C)
Humidity:65.0%
Test Distance:10.000 m
Remarks:

ISOCANDELA DIAGRAM

Report number:

MANUFACTURER: ILUMEN GMBH	Address:	
NAME: Agnes A	TYPE: IL-PO29A-N0402C-T3B	WEIGHT:
SPECIFICATION: 5050LED、3000K、T3B	DIMENSION:	SERIAL No.:

UNIT: cd



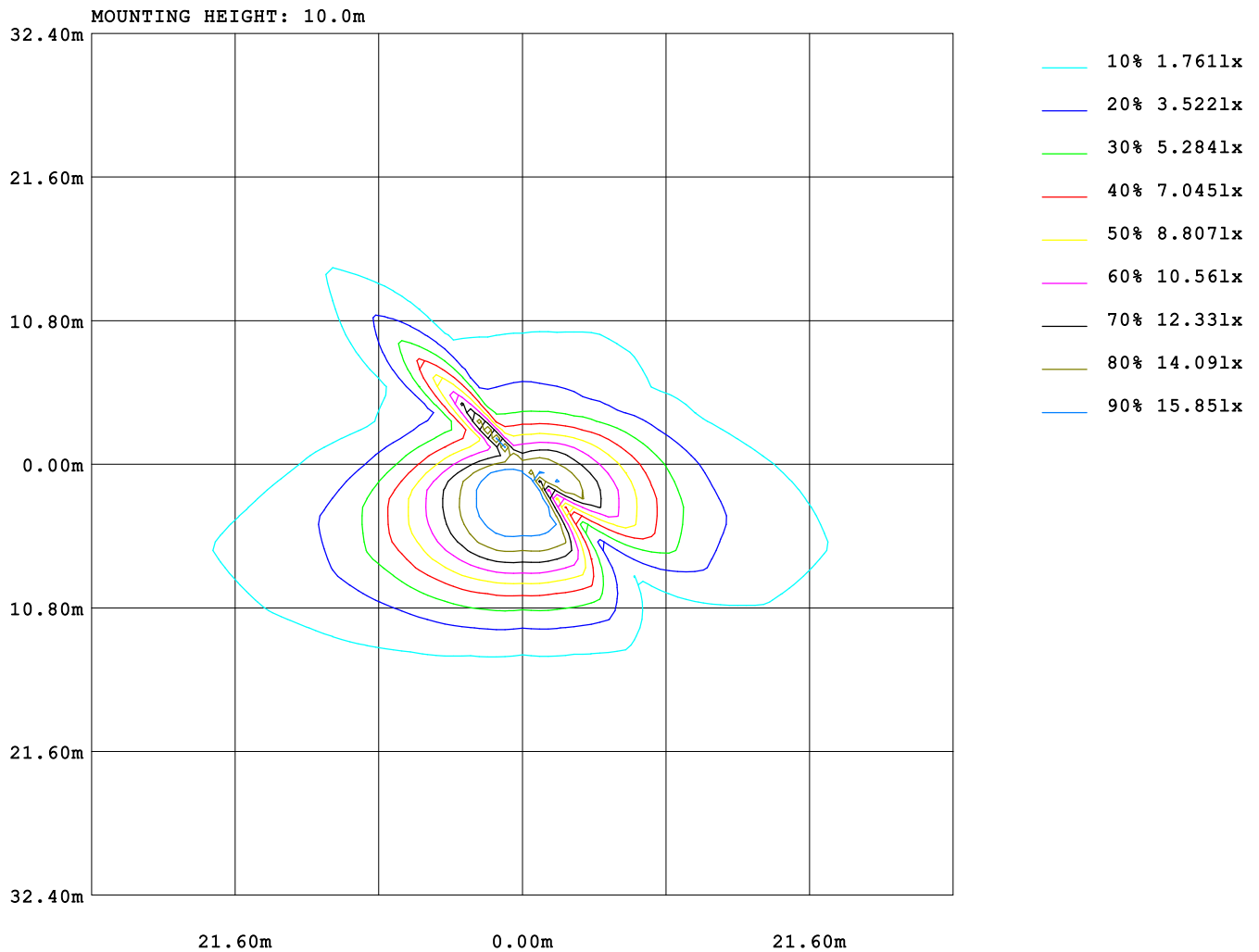
Test System:
Temperature: 25.3 DEG
Operators:
Test Date: 2025.07.01

Test Set: 5.0 deg/s C-Gamma (TYPE C)
Humidity: 65.0%
Test Distance: 10.000 m
Remarks:

ISOLUX DIAGRAM

Report number:

MANUFACTURER: ILUMEN GMBH	Address:	
NAME: Agnes A	TYPE: IL-PO29A-N0402C-T3B	WEIGHT:
SPECIFICATION: 5050LED、3000K、T3B	DIMENSION:	SERIAL No.:



Test System:
Temperature: 25.3 DEG
Operators:
Test Date: 2025.07.01

Test Set: 5.0 deg/s C-Gamma (TYPE C)
Humidity: 65.0%
Test Distance: 10.000 m
Remarks:

LUMINOUS DISTRIBUTION INTENSITY DATA

Report number:

MANUFACTURER: ILUMEN GMBH	Address:	
NAME: Agnes A	TYPE: IL-PO29A-N0402C-T3B	WEIGHT:
SPECIFICATION: 5050LED、3000K、T3B	DIMENSION:	SERIAL No.:

UNIT: cd

C (DEG) γ (DEG)	0	15	30	45	60	75	90	105	120	135	150	165	180	195	210
0.0	1487	1487	1487	1487	1487	1487	1487	1487	1487	1487	1487	1487	1487	1487	1487
5.0	1495	1553	1606	1364	1685	1708	1707	1700	1669	1634	1584	1534	1479	1418	1364
10.0	1516	1633	1732	1241	1853	1887	1877	1868	1814	1758	1674	1582	1476	1351	1241
15.0	1534	1704	1834	1126	1994	2025	2005	1998	1936	1876	1766	1641	1472	1283	1126
20.0	1556	1782	1951	1013	2086	2156	2092	2126	2018	1989	1862	1696	1472	1211	1013
25.0	1576	1856	2050	892	2250	2346	2271	2319	2196	2124	1917	1756	1473	1140	892
30.0	1602	1941	2120	774	2454	2509	2432	2481	2381	2266	2011	1827	1461	1061	774
35.0	1630	2029	2226	673	2571	2569	2442	2535	2482	2340	2115	1892	1436	967	673
40.0	1642	2096	2358	624	2503	2431	2315	2396	2416	2417	2223	1938	1387	863	624
45.0	1629	2135	2453	612	2326	2105	1973	2086	2259	2395	2309	1976	1333	740	612
50.0	1605	2177	2471	632	1993	1732	1545	1728	1960	2270	2365	2005	1274	606	632
55.0	1582	2249	2441	587	1566	1180	975	1189	1576	2003	2390	2068	1271	476	587
60.0	1637	2507	2304	469	981	655	562	654	1047	1803	2352	2337	1270	376	469
65.0	1760	2971	2284	328	527	382	325	370	496	1467	2376	2864	852	283	328
70.0	1632	3123	2328	231	275	242	183	234	263	944	2402	2649	395	171	231
75.0	1086	2477	1832	123	113	102	74.9	94.2	90.9	266	1214	1468	104	87.1	123
80.0	359	761	603	45.2	54.5	51.7	36.3	45.2	40.7	77.5	427	434	34.8	27.3	45.2
85.0	57.1	110	53.0	16.3	19.1	22.7	11.7	19.9	12.2	28.2	23.7	44.0	14.3	8.08	16.3
90.0	22.4	26.2	10.5	10.8	7.77	8.86	4.24	8.70	4.12	10.5	4.65	14.0	11.9	7.98	10.8

Test System:
Temperature:25.3DEG
Operators:
Test Date:2025.07.01

Test Set: 5.0deg/s C-Gamma (TYPE C)
Humidity:65.0%
Test Distance:10.000 m
Remarks:

LUMINOUS DISTRIBUTION INTENSITY DATA

Report number:

MANUFACTURER: ILUMEN GMBH	Address:	
NAME: Agnes A	TYPE: IL-PO29A-N0402C-T3B	WEIGHT:
SPECIFICATION: 5050LED、3000K、T3B	DIMENSION:	SERIAL No.:

UNIT: cd

C (DEG) γ (DEG)	225	240	255	270	285	300	315	330	345
0.0	1487	1487	1487	1487	1487	1487	1487	1487	1487
5.0	1606	1286	1265	1265	1274	1303	1342	1394	1450
10.0	1732	1102	1069	1068	1081	1130	1198	1298	1409
15.0	1834	934	885	884	906	974	1063	1201	1364
20.0	1951	769	718	716	740	816	931	1100	1316
25.0	2050	642	611	610	622	675	799	1008	1271
30.0	2120	596	591	594	590	602	681	907	1227
35.0	2226	602	593	591	592	604	613	797	1172
40.0	2358	622	580	570	594	624	616	691	1110
45.0	2453	603	506	492	543	638	646	607	1020
50.0	2471	506	426	426	452	586	631	562	904
55.0	2441	408	365	369	384	468	606	529	781
60.0	2304	318	309	319	319	362	470	471	633
65.0	2284	259	255	265	265	284	328	363	454
70.0	2328	190	183	194	196	210	250	251	262
75.0	1832	118	110	126	118	137	127	155	117
80.0	603	58.4	52.7	65.9	56.7	66.5	52.3	61.7	45.3
85.0	53.0	19.6	14.4	22.9	16.3	23.9	15.7	21.5	11.7
90.0	10.5	8.21	4.09	7.84	4.02	8.77	5.84	10.9	6.35

Test System:
Temperature: 25.3 DEG
Operators:
Test Date: 2025.07.01

Test Set: 5.0 deg/s C-Gamma (TYPE C)
Humidity: 65.0%
Test Distance: 10.000 m
Remarks: